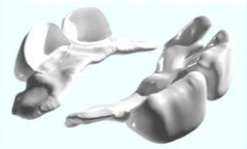


# Prices and Transport

Masticare™ Paediatric  
Bridge-Spacer



## Prices

### Masticare™ Paediatric Bridge-Spacers:

➤ 180 €

Reinforced composite (anterior) (any tooth shade)  
or  
Peek composite (posterior)(white shade)

## Transport

### Masticare™ Paediatric Bridge-Spacer transport:

- Transport is made through **DHL** company;
- Cost of transport is around **25-40€** per shipping (may vary from city to city);
- Transport is charged to the clinic on invoice;
- Invoices are sent periodically (depending on order volume);
- Delivery is made twice a week (Tuesday and Friday).

#### Notes:

1. Ideally, and in order to dilute the shipping costs, several components should be sent per package;
2. Other possibilities can be agreed when requested.

## Time to clinic

### Masticare™ Paediatric Bridge-Spacers time to clinic:

- Manufacturing takes 3 to 4 days, from file arrival to packaging;
- Delivery takes 1 day from Portugal to any country in Europe;
- From the moment the files arrive until the clinics receive the Masticare™ Paediatric Bridge-Spacers, it takes around 1 week (5 working days).

**The three in one solution**  
(space maintainer; tooth  
chewing function; aesthetics)



The parcel carrier

